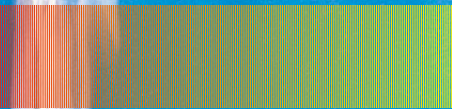


Profile

Japan Water Works Association

JWWWA





CONTENTS

Director General's Message	1
Background and Organization of the JWWA	2
Activities of the JWWA	4
Research Activities in Water Management	6
Research Activities in Water Technology	7
Training	8
International Activities	9
The Inspection Services	10
The Certification Services	11~12
Accreditation service for Good Laboratory Practice for Water Supply	12
Publication/Other Activities	13



Executive Director's Message



Water suppliers are required to provide safe and palatable water anytime, anywhere, as water is an indispensable commodity vital for human life and their social/economic activities. Japan Water Works Association (JWWA) therefore makes positive efforts to respond to these demands by offering customers a service that is both safe and stable, providing high-quality water.

JWWA is a corporate juridical body, established on May 12th, 1932, whose role is to contribute to the improvement of public health through performing various activities that advance the propagation of water supply and its development.

Our association therefore conducts research activities on water supply management, related technology and water quality problems. We also conduct inspections and quality certification of water supply equipment and materials, providing registration services for quality management systems, based on ISO standards.

In addition to these tasks, we are actively working to solve various problems of water supply throughout Japan by appealing and making proposals to central government. As you can see, there are many activities that JWWA staff and standing committees are involved in. If you want specific information on anything mentioned in this brochure, please contact JWWA at kokusai@jwwa.or.jp or by fax +81-3-3264-2306.

**Yoshihiko MISONO
Executive Director**

Background and Organization of JWWA



The first modern water supply in Japan was founded in the city of Yokohama in 1887. By 1904, when the Federation of Water Authorities (JWWA's predecessor) was established, modern water supply had begun in only seven cities (Yokohama, Hakodate, Nagasaki, Osaka, Tokyo, Hiroshima and Kobe).

At this time, these water utilities began to research various subjects such as construction, public health and maintenance of water supply, particularly focusing on water quality issues. As a result, the staff in charge of these water utilities gathered to hold 'the first Consultative Meeting' in Tokyo, to create a uniform water quality examination method.

Following the second meeting (held the next year), general water supply-related issues began to be raised, including filtration and distribution.

The practice of holding such meetings to find solutions through their collective wisdom on the various issues concerning water supply management through was popularized in this way. As water supply began to be increasingly propagated in various cities throughout Japan and member cities increased, the role of the 'Federation of Water Authorities' became increasingly important. This in turn, resulted in the establishment of the JWWA on May 12th, 1932, under the authorization of the then Minister of Interior. It was originally called the 'Water Works Association' and changed its name to JWWA in 1956.

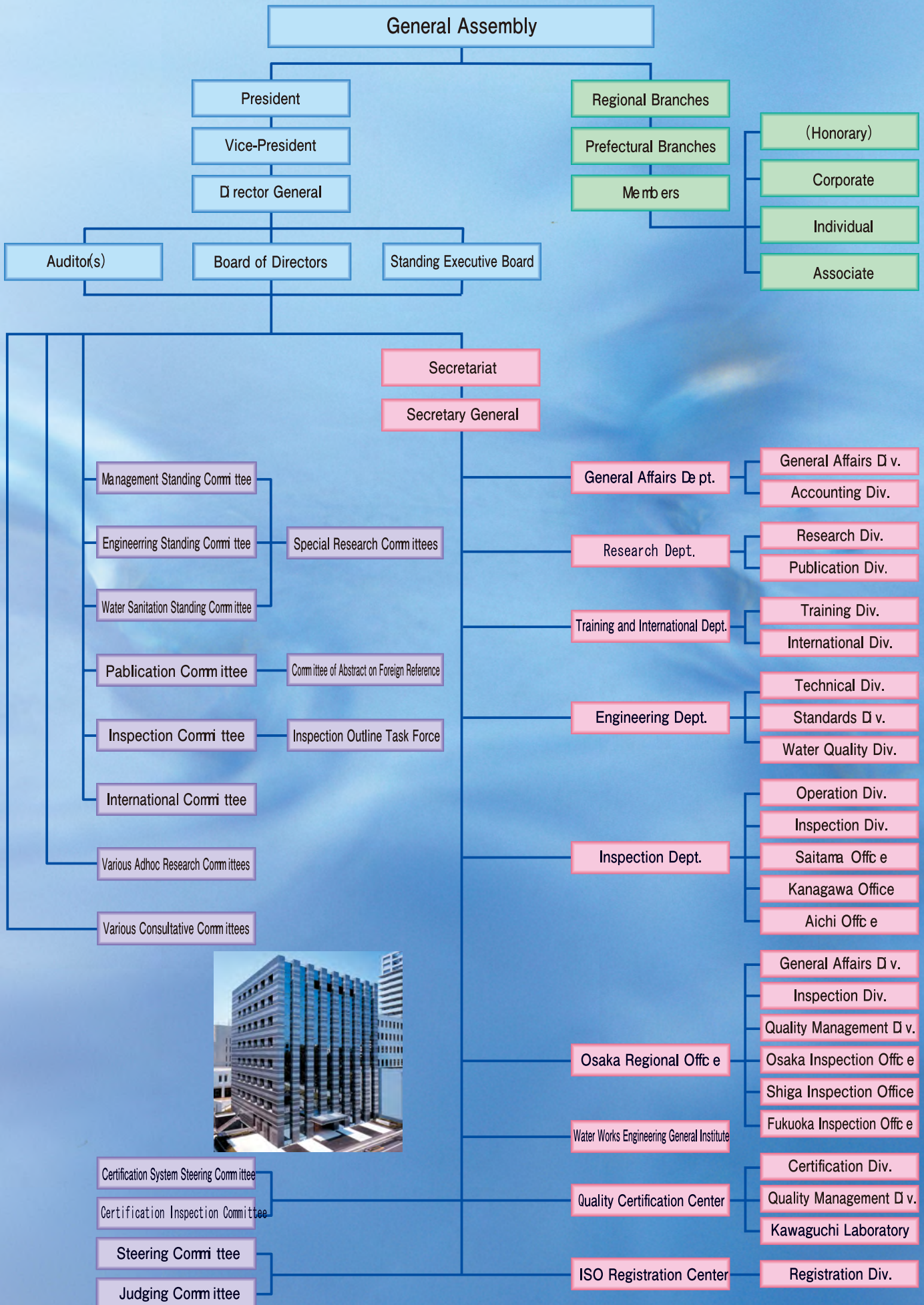
The structure of JWWA has changed several times over the years. Currently, there are 7 regional branches, 46 prefectural branches and in the Hokkaido area there are 5 consultative committees; these are all under the direction of a President and Vice Presidents. The secretariat consists of five departments: one regional office, one institute, and two centers. Based on this structure, the JWWA responds to requests from members on the development of water supply activities.

■ National Executive Members ■ Organization of Regional Branches

	Regional Branch	Vice President	Director of Regional Branch	Member of branches of To, Do, Fu and Prefectures concerned	Corporate members	Individual members	Associate members
President.....							
Vice President.....	Hokkaido	Mayor of Sapporo City	Mayor of Sapporo City	(5 District Consultative Committees)	121	26	21
Director General.....	Tohoku	Mayor of Sendai City	Mayor of Sendai City	6	163	22	12
Board of Directors.....	Kanto	Mayor of Yokohama City	Mayor of Yokohama City	8	288	286	298
Standing Executive.....	Chubu	Mayor of Niigata City	Mayor of Nagoya City	9	259	69	79
Auditors.....	Kansai	Mayor of Toyonaka City	Mayor of Osaka City	6	185	101	145
Directors of Regional Branch...	Chugoku/Shikoku	Mayor of Okayama City	Mayor of Hiroshima City	9	156	57	17
Directors of Prefectural Branches...	Kyushu	Mayor of Fukuoka City	Mayor of Fukuoka City	8	222	38	31
Directors of District Consultative Committees...	Total	—	—	—	1,394	609 (include 10 foreigners)	603

(Note : Number of members as of January 1, 2008)

Organization Framework



Activities of the JWWA



General Assembly / Branch Assembly

General Assembly/Branch Assembly
The general assembly is the supreme decision-making body of the JWWA, and usually meets in annually in the autumn. Contents of meetings include the presentation of awards recognizing members who have made significant achievements in the field of water supply, reporting on JWWA activities, budgetary matters, approval of the settlement of accounts for the fiscal year and discussion on individual issues raised by members.

Important or urgent issues of imminent concern to our industry are raised by members through discussions at general assembly meetings of both prefectural branches and regional branches. As the content of these issues are often diverse and difficult to solve by water suppliers alone, discussions are conducted to solve problems through the collective wisdom of members.

As touched upon above, at the respective prefectural and regional branches, conduct general assemblies whose contents are raising the aforementioned issues, reporting on branch activities, budgetary discussions and the approval of the settlement of accounts for each fiscal year.

Handling of Issues Raised by Members

When the general assembly decides

that issues can only be solved by the central government, strong requests and appeals are made to both the central government and the Diet (Japanese parliament), after consulting the relevant board of directors about the drafts of petitions and where petitioning should be directed.

In matters that can be handled internally, 'Standing Research Committees' for management engineering and water sanitation are delegated research on such matters. The results of this research are then





relayed to JWWA members. As such, specific measures are taken to handle these issues.

Executive Board

The 'Executive Board' is made up of the president, vice presidents, the managing director, other directors, permanent directors, auditors, regional managers and prefectural managers.

The 'Board of Directors' comprises the president, vice presidents, the managing director and directors. The 'Standing Board' consists of the president, vice presidents, the managing director and permanent directors.

Regional managers and prefectural managers also serve as directors, while permanent directors are elected from among the other directors. In other words, all 'Executive Board' members (except Auditors) are also members of the 'Board of Directors'.

The 'Board of Directors' meeting is held three times a year in January, September and November to discuss petition activities for the budget, agendas to be submitted to the nationwide general assembly and other issues regarding the management of the board.

The 'Standing Board' meeting is also held three times a year in June, August and October to discuss urgent matters as well as the management of the nationwide general assembly. 'The Board of Auditors', consisting of

three special members, holds a meeting once a year in June to discuss management and account settlements.

Efforts to Obtain Government Budget Allocations for Water Supply

At the 'Standing Board of Directors' meeting conducted at the beginning of each fiscal year, the policy for obtaining government budget allocations is decided. Strong appeals headed by the 'Board of Directors' are conducted towards the central government and the Diet during the time that budget allocations are being considered. Corporate members also (separately) petition locally elected Diet members at every possible opportunity.

JWWA's Annual Conference and Symposium

Government officials who are associated with water supply,

national research institutes, universities, water supply authorities and other related enterprises, gather together to present the results of their ongoing research/study in the ten different divisions of :

- Management
- Planning
- Water resources / water intake
- Purification
- Water conveyance / transmission / distribution
- Service installation
- Mechanical and electrical equipment
- Instrumentation
- Water quality management
- Risk control / countermeasures against disasters
- English

In addition to these presentations, forums are held with contemporary topics of particular interest in the water-supply industry as themes.



Research Activities On Water Supply Management

The 'Management Standing Research Committee' and respective Sub-Committees conduct research on issues related to water supply management, labor relations, public relations and water supply statistics.

Water Supply Management Advisory Service

A 'Water Supply Management Advisory Service' has been set up to support the development of water supply management, dealing with such tasks as improving the efficiency of water supply service. Commissioned by members, advisors with excellent knowledge conduct research, giving advice regarding water management, technology and diagnosis of hygiene. This is based on reports produced by the 'Water Supply Tariffs System Research Council' and the 'Water Management Advisory Service'.

Management and Legal Consultation Services

The JWWA provides legal consultation services by phone, fax, email and other means, on a wide variety of topics. The services can give answers to enquiries in line with legal advice if necessary.

Public Relations

Public Relations (PR) for water supply aims to improve people's understanding and recognition of issues regarding water supply. Nationwide PR activities are

centered around 'Water Supply Week', which takes place annually between June 1-7.

JWWA produces/distributes PR materials such as posters and pamphlets including titles such as 'Water Supply for Everyone', 'Japan's Water Supply' and 'Water Supply Story Series'. Water supply PR videos are also generated. These materials are put to wide use by water supply utilities throughout Japan. The JWWA homepage (created in April of 1997) provides information regarding our association and general water supply issues to both members and water service users.

Research on the Management

Members are targeted for the various research items regarding labor relations and water supply statistics. The analyzed results are then announced in the JWWA monthly journal as reference materials for members.

Director General Consultative Committee

The 'Consultative Committee' was established in 1968, consisting of a director general recommended by the managers of the JWWA's municipal branch offices, in charge of 51 water authorities. The committee was set up for the exchange of information/opinions and to hold discussions regarding various issues that water authorities face such as

management/labor relations. The 'Consultative Committee' usually meets three times a year.

Consultative Committee for Discussing Problems of Smaller-Scale Water Supply Utilities

This 'Consultative Committee' consists of 51 Water Authorities recommended by the managers of the JWWA's Municipal Branch Offices (except for the city directors), the 'Director General Consultative Committee' and the 'Water Supply Technical Director General Consultative Committee'. It was established in 1978, as a forum for exchanging information/opinions and to hold discussions regarding various common problems affecting smaller-scale water supply utilities. The council usually meets twice a year.

Prefectural Water Supply Liaison Consultative Committee

This 'Consultative Committee', consisting of the 'Director General of Public Water Supply Enterprises' in 23 prefectures, was established in 1982 to exchange information/opinions and to hold discussions regarding various common problems in prefectural water supply. The necessary ministries and experts are included in this exchange of information.



URL
<http://www.jwwa.or.jp>

Research Activities in Water Supply Technology



The 'Engineering Standing Committee', the 'Water Sanitation Standing Committee' and 'Special Research Committees', conduct research/study to solve problems regarding water supply technology. The 'Engineering Standing Committee' examines the current technical topics and provides water supply utilities throughout Japan with the examination results for their reference. JWWA endeavors to enact or revise the standards required for water supply equipment/materials, by using three 'Technical Standardization Committees'. Additionally, the 'Water Sanitation Standing Committee' conducts deliberation on water quality problems and on the standardization of chemicals for water supply. It also publishes books including those on the standard methods for examining water as well as the water supply organisms in Japan.

Special research committees are established to deliberate on issues related to water supply. They can deal with guidelines for designing water supply facilities, guidelines for water supply maintenance/control, guidelines for earthquake resilient engineering methods used in building water supply facilities and research on emergency measures (including earthquakes). These committees are formed based on the approval of the board of directors. The 'Meeting of Countermeasures pertinent to Water Supply Issues on the Chang Period' deals with issues concerning problems in the water supply business.

The results of these deliberations are published as guidelines and these are communicated to members via the JWWA journal.

The Ministry of Health, Labour and Welfare, assigns research/studies to JWWA on matters related to water supply utilities.



Research, Study and Development of Water Supply Technologies

The 'Water Supply Technology Institute' has been conducting research pertinent to the solution of technical issues affecting water supply facilities. The institute has developed through the cooperation of water utilities and manufacturers over the past years, ensuring a practical solution for the problems mentioned. It is also provides consultation on technical issues concerning water supply.

The Institution is presently carrying out work on the following projects:

- A study into optimum ozone treatment
- A study on countermeasures to reducing offensive tastes and odors at water supply systems
- Development on water supply chemical storage tanks made from titanium
- Research on a diffuser apparatus applied to high concentration ozone dosage
- Development of a butterfly valve to fully function with water
- Research of a water quality examination methods for Cryptosporidium using DNA
- A research of upgrading the operation/maintenance of a valve and iron lid using water supply

Consultation Service for Water Supply Engineering and Water Quality

The JWWA provides advice and support via telephone, fax or email

for consultation on urgent problems regarding water supply engineering.

Standardization of Water Supply Equipment and Materials

Draft standards of water supply equipment/materials are referred to the JWWA's Engineering Standing Committee and Water Sanitation Standing Committee, upon the request of members.

After the technical committees evaluate the quality, uniformity, performance, workability, and sanitation of the item, the JWWA approves them with a 'JWWA Standard' or amends them as required. The number of standards is 88 as of April 1st, 2004.

Water Supply Technical Director General Consultative Committee

Technical director generals of 51 water supply authorities, recommended by the managers of the JWWA's municipal branch offices, are constantly trying to improve measures for examination techniques through exchanging information on technical problems that utilities have faced ranging from reservoir facilities to service installation.

In addition, seminars, meetings and technical visits to facilities are conducted whilst new techniques on water supply are deliberated. The 'Consultative Committee' was established in 1971 and usually meets four times a year.

Training

Training

Various training seminars in management/technical areas are arranged for the purpose of developing and improving the human resources of water supply utilities and supporting members. The following table shows the training courses that are regularly held every year. In addition to these courses, other seminars are held as necessary.

The Kawaguchi Training Center, our main training facility, completed in June 1993, has a large training room, furnished with audiovisual devices including an extra-large 100-inch monitor screen. It has a seating capacity of 130 and is located in Kawaguchi City.

Practical Training Course on Pipeline Design and Pipe Laying Distribution

JWWA has been carrying out practical training courses on pipeline design and pipe laying distribution for water supply technicians. On completion, one is registered as an 'apprentice of pipe distribution'.

Registration System: Certificate for Water Industry Operation

JWWA carries out a system of responsibility/judgment regarding ongoing maintenance and operation of water supply, covering all engineers employed by both private companies and public water utilities alike.

The qualifications range from Certificate I to Certificate III for water treatment and water pipelines. The Qualifications were developed through comprehensive consultation with four Japanese water organizations.



TITLES OF TRAINING COURSES
<p><Management></p> <ul style="list-style-type: none"> Training Course for Director Generals of Water Supply Training Course for Newly Appointed Director Generals of Water Supply Training Course for Executive Staff on Management of Water Supply Training Courses on Water Utility Management <ul style="list-style-type: none"> (1) Administration <ul style="list-style-type: none"> Introductory course Intermediate course (2) Labor Relations
<p><Management / Technical></p> <ul style="list-style-type: none"> Basic Course of Water Supply
<p><Technical></p> <ul style="list-style-type: none"> Training Course for Technical Directors of Water Supply Water Leak Prevention Course Training Course for Water Supply Engineers <ul style="list-style-type: none"> Introductory course Intermediate course Specialized Training Course for Water Supply Engineers <ul style="list-style-type: none"> (1) Division of Design, Construction, and Operation & Maintenance of Water Transmission and Distribution Facilities (2) Advanced Water Treatment Facilities Division (3) Service Installation Division (4) Water Quality Management Division (5) Water Purification Facilities Division (6) Mechanical, Electrical and Instrumentation Equipment Division Training Courses for Water Supply Engineers by Each Block Training Course for Acquiring Qualifications for Technical Directors of Water Supply Utilities Training Course of Distribution Pipe Laying Training Course of Pipeline Design
<p>Registration System : Certificate in Water Industry Operation</p>

International Activities



Overseas In-Service Training Through the International Exchange Fund

The JWWA established the International Exchange Fund in 1990, with a view to dispatching intermediate staff (from its corporate membership) overseas for training. The main aims of this program are to develop human resources, nurturing an international perspective/knowledge through experience in studying/observing water supply problems in other countries. This contributes to the further development of Japan's water supply, by reporting the findings of such training to JWWA members. Every year, training (for about 30 trainees) is conducted as follows:

- Attendance at the American Water Works Association (AWWA) Annual Conference, including a study tour of urban water supply facilities
- Group Training at Water Training International (WTI) in the UK, including a study tour of urban water supply facilities
- Group Study tour to major urban water supply facilities overseas
- Individual Training according to respective specialties

Training or Dispatching of Water Supply Engineers from/to Developing Countries by Japan International Cooperation Agency (JICA)

At the request of JICA, JWWA has

carried out training for water supply engineers since 1970. As of FY 2003, the total number of engineers is over 538.

In addition, JWWA dispatches experts (including the areas of water supply utilities and senior international cooperation) to developing countries. This makes great contributions to the propagation of water supply throughout world by cultivating human resources needed for its development and transferring waterworks technology to those countries.

International Cooperation System of Senior Experts on Water Supply

In 1993, as part of its international cooperation activities, the JWWA established an international cooperation system of senior experts on water supply.

This system appropriately utilizes the rich water supply expertise of retirees from local public bodies for a friendly, technical, transfer towards developing countries. It aims to contribute to the development of their water supply services and human resources. There are currently 49 members registered with this scheme.

Activities Related to the International Water Association (IWA)

IWA is an international organization inaugurated in September 7th, 1999

by the merger of the International Water Services Association (IWSA) and the International Association on Water Quality (IAWQ). Its headquarters are located in London, UK.

The aim of the association is to promote the integrated management of water, as the best strategy for securing safe water supplies and adequate sanitation for communities worldwide.

Initially JWWA had joined the former IWSA as a regular member in 1955 and the Japan Society on Water Environment (JSWE) joined former IAWQ as a national member in 1970. Both of these Japanese organizations sent a lot of speakers for the science and technology programs of the international associations.

After the merger, both the JWWA and the JSWE joined the new association in the IWA Japan National Committee and have since sent numerous speakers for the association's science, technology and water management policy related programs.

Other activities

Through the activities organized for our members (eg. overseas conferences and presentations, exchanging worldwide information concerning waterworks, accepting research groups from foreign countries), our association acts as a coordinator for water utilities between Japan and other countries.

The Inspection Services

Fair and Strict Inspection Supports a Safe and Stable Water Supply

The JWWA conducts performance tests (regarding water supply equipment/materials) fairly and strictly, at the request of a manufacturer and according to objective standards.

JWWA is always working to improve its inspection techniques/technology to promote appropriate management in response to contemporary needs. It is therefore necessary to conduct technical research to improve the understanding of inspection committees. 21 local resident inspectors based in 7 inspection offices established throughout Japan conduct the inspections. Efforts are always made to improve inspection technology, using state-of-the-art equipment. To ensure a safe water supply and to create stable water supply systems, it is important to use high quality/reliability water supply equipment as guarantees of product performance is becoming increasingly important.

Four Management Systems for Inspection Services

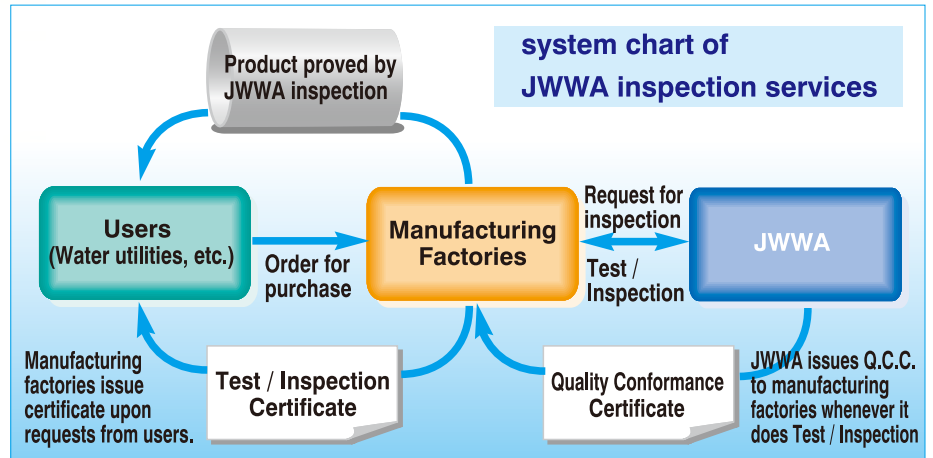
1. Product Performance Test and Inspection

Efforts are made to maintain product quality by inspection and confirmation through performance testing. This can be done either at a JWWA laboratory or a manufacturer's factory. Tests include variables such as hygiene and are based on the standards specified in a customer's order.

2. Indication of the Inspection Certification Mark

Products that are labeled with the following certification marks enable purchasers and other parties to judge high-quality products. Only products that have passed inspection are entitled to the certification mark.

3. Issuing of Quality Conformance Certificate and Inspection Certificate
Quality Conformance Certificate is issued from JWWA to manufacturing



factories to objectively prove in written form that the product has passed inspection. On a basis of the Quality Conformance Certificate, manufacturing factories can issue an inspection certificate to water utilities and the like upon their requests.

4. Public Registration of Inspected Factories and Products

The JWWA is making efforts to propagate good-quality water supply equipment and to further improve their quality by preparing a list of manufacturing factories that have been registered as inspected factories; their registered inspected items will also be referenced. The published manual will be widely available to all water supply-related people.

Designated Inspection Organization of JIS Indication-Authorized Factories

In November 2005, the Minister of Economy, Trade and Industry designated JWWA as the Product

Certification Bodies of JIS Mark based on the Industrial Standardization Law. Upon the application of manufacturers, JWWA properly and strictly examines the quality control systems of the Japan Industrial Standards (JIS) indication-authorized factories that produce JIS indication-designated products for water supply. This ensures the quality of water supply equipment and materials.



INSPECTION CERTIFICATION MARK

Inspection certification mark indicated on products that have passed inspection



For carving : 4.6.9mm
For stamping/spraying : 6.9.15.30mm
For casting : 18.25mm
For preliminary certificate seals : 2.3.4.6.9.15.18.25.30mm

URL

<http://www.jwwa.or.jp/kensa/>



The Certification Services

Certification System

A certification system was established in April 1997 to secure the safety of tap water. The 'Quality Certification Center' aims to serve consumers, waterworks utilities, water supply construction companies and providers of water service tools by granting certification, from a viewpoint of a third party. It judges whether water supply tools satisfy legal frameworks as well as material standards and subsequently publicizes the related information. In October 2000, the center started a third-party certification of the safety of materials, equipment, chemicals, etc. that are used by water supply utilities for purified water or in the process of purifying water.

Scope of Certification

The JWVA grants certification, targeting the following.

1. Service pipes branched from the distribution pipes of the water supply utilities and the water supply tools that are directly connected to those pipes (water supply tools include faucets, valves, pipe joints and water heaters)
2. Materials (or equipment), used by the water supply facilities treating purified water or water in process of filtration
3. Chemicals to be used in the purification / filtration of water

Inspection Standards

1. Water supply tools; basic standards. The inspection will be conducted according to the standards applicable to structures and materials of water supply equipment based on Article 16 of the Waterworks Law.
2. Water supply tools; special standards. The special standards include performance areas such as appearance, shape, dimension, convenience and comfort in addition to the items included in the basic standards.
3. Materials; technical standards. This inspection will be conducted on 46 exudation-related performance items as defined in the ordinance of the Ministry of Health and Welfare.
4. Chemicals; technical standards. These are standards for chemical substances added to water. The inspection is conducted on 41 items defined by the ordinance of the Ministry of Health and Welfare.

Types of Quality Certification Mark

Products that satisfy the basic standards and those that satisfy the special standards are identified with seals, carvings, stamping, casting and printing. Products that satisfy the technical standards are also identified with seals, etc.

Certification System Steering Committee

This committee was established to ensure fairness and transparency of certification. It consists of qualified experts, consumers, water supply utilities, suppliers and people with specialist knowledge on water supply tools, materials and chemicals. The committee conducts examinations and deliberations on the important issues to ensure neutrality in certification.

Certification Inspection Committee

This committee was established to ensure the safety of water service tools, materials, chemicals, etc. It consists of qualified experts, consumers, water supply utilities, suppliers and persons with specialist knowledge about water supply tools, materials and chemicals. The committee provides technical/expert advice, conducting evaluations regarding the quality certification of the products that have new structures or are manufactured by the use of new materials.



CERTIFICATION MARK USED FOR PRODUCTS WHICH HAVE CONFORMED TO THE BASIC STANDARDS

Printed seals, printed carving, stamping, casting, printing



CERTIFICATION MARK USED FOR PRODUCTS WHICH HAVE CONFORMED TO THE SPECIAL STANDARDS AND THE TECHNICAL STANDARDS

Printed seals, printed carving, stamping, casting, printing.



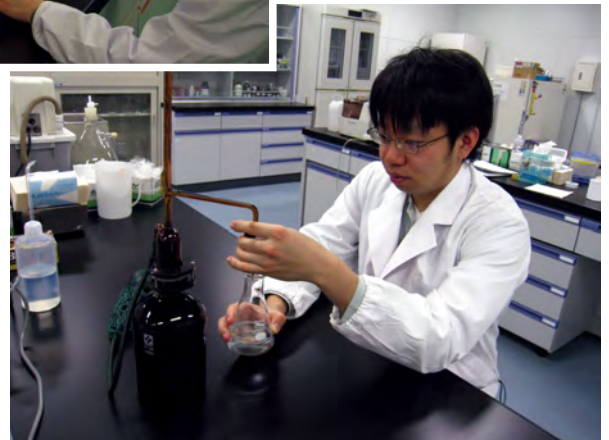
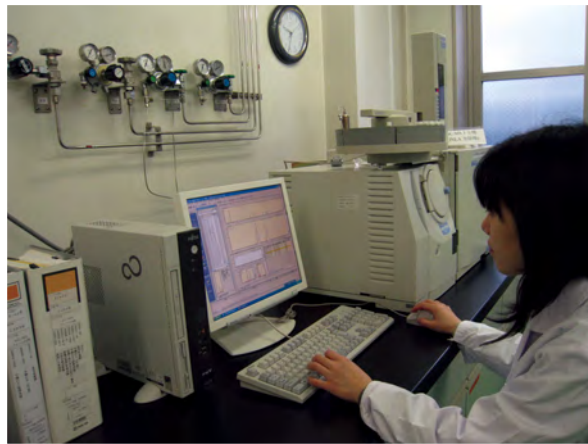
URL

<http://www.jwva.or.jp/Center/>

The Certification Services / Accreditation service for Good Laboratory Practice for Water Supply

Kawaguchi Laboratory (JWWA Kawaguchi Building)

The laboratory is fully equipped to test the conformity of products to certification standards. Certification means that the physical aspects and exudation-related performance are tested. Quantitative examinations can also be conducted for chemicals added to water.



Accreditation service for Good Laboratory Practice for Water Supply

In September 2004, JWWA provided “Good Laboratory Practice for Water Supply” as a standard for water inspection laboratories to ensure reliability of their inspection practices. Accreditation Committee by third party was set up and secretariat was provided at JWWA in August 2005.

JWWA has provided accreditation service to date.



ACCREDITATION SERVICE FOR
GOOD LABORATORY PRACTICE
FOR WATER SUPPLY MARK

Publications / Other Activities



Water Supply Repairs Liability Insurance

This insurance pays damages for accidents arising from water supply. JWWA concludes contracts with a non-life insurance company on behalf of its members.

Under the insurance system, compensation is paid for accidents in handling machinery or submarine water pipes owned by members and to the injuries suffered by the person in charge of gauge examination.

The JWWA monthly magazine, 'JWWA Journal', acts as both a bulletin and scientific journal. We also publish many other water supply-related books. The main publications include, as separate volumes, 'Collection of Water Supply-Related Cases', 'Guidelines on Design of Water Supply Facilities', 'Guidelines on Earthquake-Resistant Engineering Methods for Water Supply Facilities', 'Guidelines on Waterworks Maintenance and Management' and 'Standard Methods for Examination of Water'. Among our periodicals, 'Journal of JWWA' is a monthly publication but we also produce annual publications, which are 'Water Supply Statistics', 'Water Supply Rates Tables', and 'Proceedings of JWWA's Annual Conference and Symposium'.

JWWA conducts various committee activities for water supply-related research and has presented excellent theses in its Journal over many years, contributing to the progress of sanitary engineering. Because of such achievements, the Scientific Council of Japan designated JWWA as a scientific organization and our journal as a scientific publication. The Journal's ISSN is 0371-0785. In addition, JWWA is also designated as a scientific organization by the Patent Office so with regard to inventions and ideas presented in written form in the JWWA Journal or at study gatherings such as national water supply study presentation seminars, patent application rights are protected for six months following such a presentation.

Headquarters

4-8-9 Kudan-minami, Chiyoda-ku, Tokyo 102-0074, Japan

General Affairs Dept.FAX: +81-3-3262-2244
General Affairs Div.TEL: +81-3-3264-2281
Accounting Div.TEL: +81-3-3264-2287
Research Dept.FAX: +81-3-3264-2205
Research Div.TEL: +81-3-3264-2359
Publication Div.TEL: +81-3-3264-2395
Training / International Dept.FAX: +81-3-3264-2306
Training Div.TEL: +81-3-3264-2462
International Div.TEL: +81-3-3264-2307
E-mail : kokusai@jwwa.or.jp
Engineering Dept.FAX: +81-3-3264-2237
Technical Div.TEL: +81-3-3264-2496
Standards Div.TEL: +81-3-3264-2543
Water Quality Div.TEL: +81-3-3264-2554
Inspection Dept.FAX: +81-3-3264-4563
Operation Div.TEL: +81-3-3264-2634
Inspection Div.TEL: +81-3-3264-2709

SAITAMA INSPECTION OFFICE

.....TEL: +81-48-251-3805, 3806 FAX: +81-48-252-6241

KANAGAWA INSPECTION OFFICE

.....TEL: +81-44-233-8325, 8326 FAX: +81-44-233-8327

AICHI INSPECTION OFFICE

.....TEL: +81-52-681-3136 FAX: +81-52-681-1909

OSAKA INSPECTION OFFICE

SOUTH REGION

.....TEL: +81-6-6621-1930 FAX: +81-6-6621-1934

WEST REGION

.....TEL: +81-6-6621-5698 FAX: +81-6-6621-7441

SHIGA INSPECTION OFFICE

.....TEL: +81-749-23-8391 FAX: +81-749-26-5110

FUKUOKA INSPECTION OFFICE

.....TEL: +81-92-472-1707 FAX: +81-92-411-3500

Water Works Engineering General Institute.

..... FAX: +81-3-3262-2244

TEL: +81-3-3264-2337

Quality Certification Center.....FAX: +81-3-3264-4634

Certification Div.TEL: +81-3-3264-2736

Quality Management Div.TEL: +81-3-3264-2736

ISO Registration CenterFAX: +81-3-3221-2538

Registration Div.TEL: +81-3-3264-2759

JWWA WEB page ... <http://www.jwwa.or.jp>

OSAKA REGIONAL OFFICE

1-19-13 Miyahara, Yodogawa-ku, Osaka City, Osaka Pref.
532-0003, Japan

TEL: +81-6-6397-8081 FAX: +81-6-6397-8085

KAWAGUCHI TRAINING CENTER

4-3-39 Kawaguchi, Kawaguchi City, Saitama Pref. 332-0015,
Japan

TEL: +81-48-258-3881 FAX: +81-48-254-8022

**QUALITY CERTIFICATION CENTER KAWAGUCHI
LABORATORY**

4-3-39 Kawaguchi, Kawaguchi City, Saitama Pref. 332-0015,
Japan

TEL: +81-48-240-6511 FAX: +81-48-240-6512