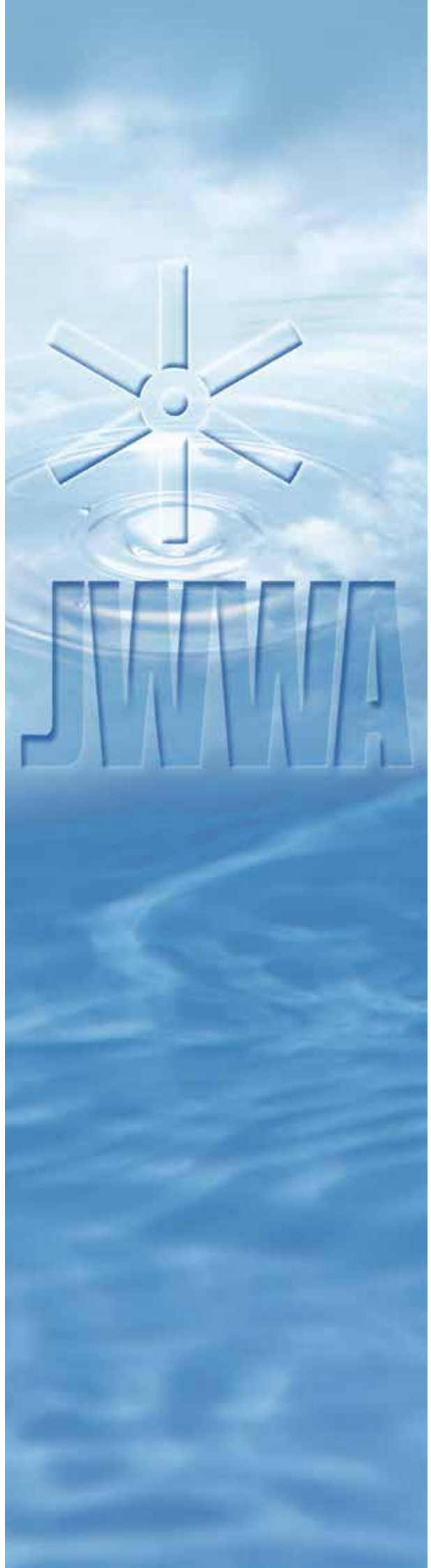


Profile

Public Interest Incorporated Association

Japan Water Works Association



Safe and tasty water anytime, anywhere



CONTENTS

Executive Director's Message	1
Background and Organization	2
Member's Initiative.....	4
Perpective Solutions.....	5
Research Activities Water Supply Management ...	6
Research Activities Water Supply Technology	7
Training	8
International Activities	9
Inspection Service	10
Quality Certification Service	11
GLP Accreditation Service	12
Publication	13
Other Service	13

Executive Director's Message



Japan Water Works Association (JWWA), a Public Interest Incorporated Association, was established on May 12th, 1932 with the aim of spreading water supply in Japan and sound development of water supply technologies.

Water supply is an essential lifeline for people's daily life as well as social and economic activities.

Therefore, it is particularly important to provide safe and stable supply service as well as quality water.

JWWA's main activities include research and study of water supply management, technologies and water quality.

JWWA also provides various service such as inspection and certification of water supply related products to maintain stable and safety water supply, which is indispensable for people's daily life.

In addition, JWWA actively lobbies and makes recommendations to government for solving water utilities' related issues in Japan, so as to help sustain water services toward the future.

吉田 永

**Ei Yoshida
Executive Director**

Background and Organization



At the time when the Federation of Water Authorities (JWWA's predecessor) was established in 1904, Japan was in an early stage of introducing modern water supply. Modern water supply service was provided only in major port cities including Yokohama (service started in 1887), Hakodate, Nagasaki, Osaka, Tokyo, Hiroshima and Kobe. In those days, there were growing tendency among water utilities toward research and study of subjects related to construction, public hygiene and administration of water supply, and water quality was the most critical issue.

Dr. Tinkichi Toyama (Director of Tokyo Institute of Public Health), who advocated establishing a "standard method of water quality examination", called on holding a "Consultative Meeting for Establishing a Standard Method of Water Quality Examination" (the first meeting was held in Tokyo), and this became the origin of JWWA. In the second meeting held in the following year and subsequent meeting, not only water quality but general issues relating to water supply such as purification and distribution engineering.

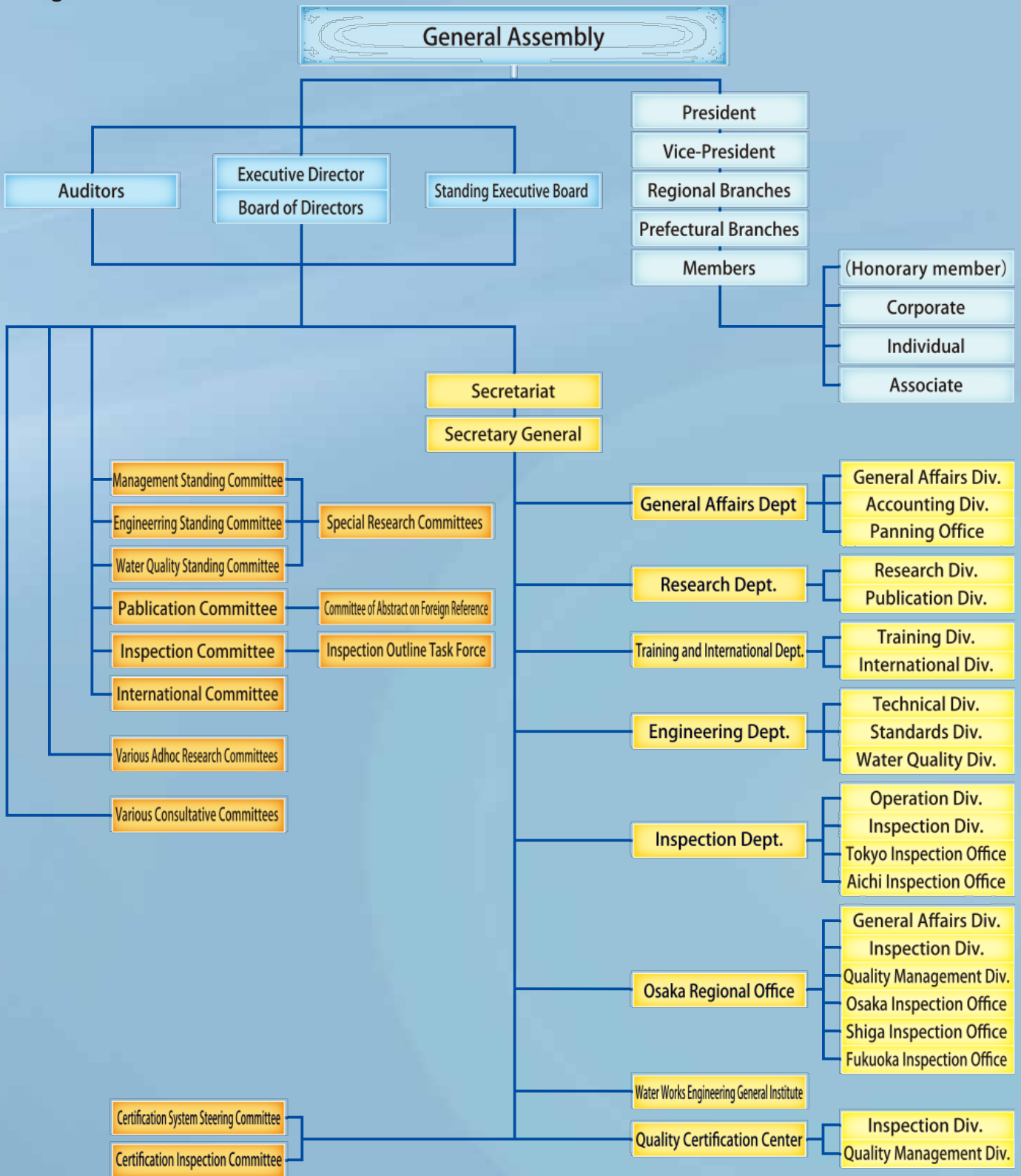
This led to the current tradition in the water-supply utilities that all stakeholders are involved to collectively find solutions for various issues.

As water supply started to cover cities and towns in Japan and the number of cities participating in the meeting increased, the role of the "Federation of Water Authorities" became important.

JWWA established on May 12th, 1932 on behalf of the Federation under the approval of the Minister of Interior. (The body was changed to Incorporated Association in 1956 and became Public Interest Incorporated Association in 2013.)

Currently, there are seven regional branches, 46 prefectural branches as well as five branches in Hokkaido. The secretariat consists of five departments, one regional office, one institute and one center. JWWA is committed to fulfilling our members' objectives for advancing water supply service and providing safe and sustainable water supply for the people.

Organization and Secretariat



National Executive Members

President	1
Vice President	7
Executive Director	1
Boad of Directors	13
Auditors	2
Directors of Regional Branch	7
Directors of Prefectural Branches	46
Directors in Hokkaido	5

Organization of Regional Branches

Regional Branch	Vice President	Director of Regional Branch	Member of branches	Corporate members	Individual members	Associate members
Hokkaido	Mayor of Sapporo City	Mayor of Sapporo City	5	131	17	24
Tohoku	Mayor of Sendai City	Mayor of Sendai City	6	159	19	20
Kanto	Mayor of Yokohama City	Mayor of Yokohama City	8	239	203	271
Chubu	Mayor of Niigata City	Mayor of Nagoya City	9	257	31	72
Kansai	Mayor of Toyonaka City	Mayor of Osaka City	6	182	61	120
Chugoku/Shikoku	Mayor of Okayama City	Mayor of Hiroshima City	9	165	34	23
Kyushu	Mayor of Fukuoka City	Mayor of Fukuoka City	8	222	23	33
Total	-	-	-	1,355	392 (include 4 foreigners)	563

(Number of members as of March 31, 2017)

Member's Initiative



General Assembly / Branch Assembly

The general assembly is the supreme decision-making body of JWWA. Contents of meetings include reporting of JWWA activities, approval of accounting reports, reporting of budgets as well as award presentation for meritorious members who made significant achievements in the field of water supply and discussion on issues raised by members. Through discussions at general assembly meetings of prefectural and regional branches, members table critical issues that require urgent actions and cannot be individually solved by water supply utilities. In a general assembly, members gather their ideas and knowledge to solve issues through intense discussions. Each regional branch and prefectural branch also holds the branch's general assembly. In each general assembly, issues raised by members mentioned

above as well as reporting of regional activities, approval of regional accounting reports and budgets are discussed.

Executive Board

Executives consist of the president, the vice-presidents, executive director, directors and auditors. The board of directors consists of the executive director and directors. Members of the board discuss matters related to arrangement and management of general assembly and approval of budgets.

Matters important for the water supply industry that is raised by members and lobbying activities are discussed by the directors of regional and prefectural branches. The auditors do audit and publish accounting reports.

Mutual Support Network in the Case of Disaster

JWWA formulated the mutual support network among member utilities to supply safe water to the disaster hit area immediately which learned from support activities at the time of Great Hanshin Earthquake in 1995.

Although the support activities are conducted based on the mutual cooperation between members of JWWA prefectural and regional branches, it will be conducted nationwide depending on the scale of the disaster. In the Great East Japan Earthquake in 2011, over 500 members of water utilities from all over Japan cooperated and supported for long term.



Perpective Solutions



Conference and Symposium

Stakeholders of water supply service such as government, national research institutes, water supply utilities and water supply industries gather together to present results of their research and study activities at JWWA's annual conference and symposium. The conference consists of the following ten divisions: management, planning, water resources/water intake, purification, water conveyance/transmission/distribution, service installation, mechanical/electrical/instrument, water quality, and risk management/disaster contingency plan, English. In conjunction with presentations, water forum is held for discussing common issues in the field of water supply.



Commendation Ceremony

Lobbying Activities

At the standing board of directors meeting held at the beginning of each fiscal year, plans for securing government budget allocations are established. JWWA headed by the board of directors aggressively lobbies the central government and legislatures on appropriate occasions during the course of budgetary process until the budget is authorized by the cabinet.

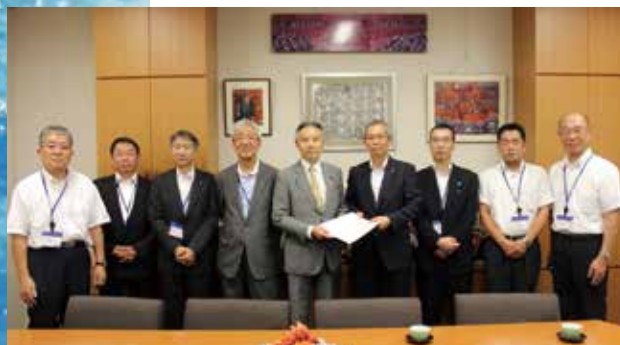


Conference

Handling of Issues Raised by Members

If the general assembly concludes that an issue requires support from the central government, petition drafts and relevant authorities to lobby are decided by the nearest board of directors meeting and JWWA aggressively lobbies the government and legislators to attempt to solve the issue.

If an issue can be internally handled by the secretariat, the standing committees (management, engineering, water sanitation) are tasked to study the issue and study results are disclosed to members.



Lobbying Activities

Research Activities

Water Supply Management

Research on Management

The management standing research committee and special committees of management, labor relations, marketing operation, public relations and water supply statistics research and study on their respective field.

Water Utility Management Advisory Service

In response to a recommendation by the Water Supply Tariffs System Research Council issued on August 20, 1996, JWWA has been providing the water utility management advisory service since April 1, 1997 to support development of water supply management through improvement of efficiency.

By request from members, expert advisors are dispatched to give assessment and advice with regard to management of water supply, technology, water quality and hygienic conditions.

Management and Legal Consultation Service

JWWA provides management and legal consultation service. If necessary, we seek advice from a chartered accountant as a management advisor and a lawyer as a legal advisor to give appropriate responses to inquiries.

Public Relations

JWWA's promotes public understanding and awareness of



water supply for stakeholders. JWWA engages in nationwide PR activities with the special focus on Water Supply Week, which takes place between June 1 and 7 annually. JWWA prepares and distributes various PR materials such as posters and pamphlets entitled "Water Supply for Everyone", "Water Supply in Japan" and "Water Supply Story Series". These materials are widely used by water supply utilities in Japan.

Our website also provide a wide range of information about the association and general water supply related topics for our members and the general public.

Various Survey Activities

JWWA conducts various surveys with members regarding water supply statistics. We collect and analyze data and publish in the JWWA monthly journal.

Director General Conference

The Director General Consultative Conference was established in 1968. This conference consists of director generals of 51 water supply utilities elected in the prefectural branches.

Committee is held three times a year to exchange information and ideas as well as to discuss various water supply related issues.

Conference for Small-Scale Water Supply Utilities

This conference was established in 1978 and consists of members of 51 water supply utilities recommended by the directors of prefectural branches. Members of executive directors, the director general consultative committee and the water supply technical director general consultative committee are excluded from member selection. Conference meetings are held two times a year to exchange information and ideas as well as to discuss various water supply related issues commonly shared by small-scale utilities.

Prefectural Water Supply Utilities Conference

This conference was established in 1982 and consists of 22 prefectural water supply utilities. In here, members exchange information and opinions as well as discuss various water supply related issues commonly shared by prefectural water supply.



URL
<http://www.jwwa.or.jp>

Research Activities

Water Supply Technology

Technical Research and Study

The Engineering Standing Committee, the Water Quality Standing Committee and the Special Research Committee conduct research and study on water supply technology to solve issues related to water supply. The Engineering Standing Committee selects and researches current technical issues. Research results are provided for water supply utilities. With regard to standards of water supply equipment, four Technical Standardization Committees are commissioned to define or amend various standards if requested. The Water Quality Standing Committee is tasked to deal with water quality related issues and to define specifications of chemicals used for water supply. This committee also publishes books entitled standard methods of water quality examination and organisms in drinking water in Japan. With regard to special publications related to water supply (e.g. design criteria for water supply



facilities, guidelines for water supply maintenance and management, seismic design and construction guideline for water supply facilities, research of earthquake contingency planning), special research committees are formed based on the approval of the board of directors. And the “Challenging Committee for Consideration of Future Water Supply scheme” deals with issues that have significant impact on water supply and require urgent action. Committees’ discussion results are published as guidelines and policies. Results are also available for members through the JWVA journal and website. JWVA conducts research and study commissioned by the Ministry of Health, Labour and Welfare and other entities.

Standardization Service

JWVA’s Engineering Standing Committee and Water Sanitation Committee as well as special technical committees established by these committees evaluate durability, compatibility, adaptability and hygiene of water supply equipment and materials upon request from members. The evaluation results are published as JWVA standards or used to modify existing standards. (There are 87 standards as of March 31, 2017)

Water Works Engineering General Institute

In order to solve various technical

issues in water supply, the Water Works Engineering General Institute conducts research and study activities including performance indicators (PIs), seismic technology, maintenance and management of water supply pipelines, environmental issues, water quality issues and ISO standards. Results of its activities are made available to the members. Currently, the institute mainly focuses on research and study of practical issues in water supply utilities. Also, the institute established “Project Promotion Department” in September 2009 to dynamically respond to latest needs surrounding water supply. The department has initiated the “Nationwide public and private partnership promotion project” to strengthen operations of water supply with specific support activities.

Consultation Service

JWVA gives advice and support with regard to urgent issues relating to water supply technology and water quality that requires swift action as the necessity arises.

Water Supply Technical Directors Conference

Technical directors of 51 water supply utilities exchange information with regard to technical issues ranging from reservoir facilities to supply systems to study measures and improve technical levels. The members visit facilities to get ideas on new technology. This was established in 1971 and holds meetings three times a year.



Training



Training

JWWA provides various training programs and seminars relating to management and technology to develop and improve their skills of employees in water supply utilities. The table below shows the regular training programs conducted every year. Special programs are also provided depending on demands. Training programs are mostly offered in the Kawaguchi Training Center and the Osaka Building, which are excellent training facilities.

Practical Training Course

In order to maintain and improve piping technique and skills, JWWA has been providing pipeline design and piping technique training programs for designing and piping

technicians since 2001.

Technicians who have completed the training course of distribution pipe laying can be registered as a “distribution pipe laying technician”.

Accreditation and Registration Scheme

JWWA has an evaluation and accreditation scheme for water supply engineers and operators of both private and public sectors in terms of water supply facility maintenance and management skills.

There are two types of qualification: One for water treatment, and another for piping. Each qualification has three grades from first to third grade. This scheme is established jointly by four major organizations in the field of water supply.

TITLES OF TRAINING COURSES
<p><Management Course/Technical Course> Basic Course of Water Supply</p>
<p><Management Course> Newly Appointed Director Generals Executive Staff on Management Water Utility Management (1) Administration Course A Course B (2) Labor Relations Practical Training for Collection of Unpaid Water Bills Practical Training on Consumption Tax</p>
<p><Technical Course> Technical Directors Training for Water Leak Prevention Practical Technical Training Course on Water Purification Plant Training for Water Supply Engineers Course A Course B Specialized Training for Water Supply Engineers (1) Design, construction, maintenance and management of service pipes and distribution facilities (2) Water treatment facilities (3) Water supply system (4) Water quality management (5) Water purification facilities (6) Mechanical, electrical and instrumentation equipment Training for Seismic Design and Construction Training for Water Supply Engineers by Regional Blocks Training for Acquiring Qualifications for Technical Directors of Water Supply Utilities Training of Distribution Pipe Laying Training of Pipeline Design</p>
<p>Accreditation and Registration Scheme for Water Supply Facility Management Technicians</p>

International Activities

Japan's water supply is regarded as one of the best services in the world for its high technical levels and excellent operational know-how. As water supply services expand to global markets, elevating Japan's current levels of water supply in line with international trends as well as contributing to uplift in developing countries based on Japan's experience are anticipated.

JWWA actively promotes international activities to play a responsible role in the international community and to continue to provide high quality water supply services in Japan.

Cooperation with overseas associations

• Interaction and Cooperation with Overseas Water Works Associations

It is essential to utilize an international network when implementing various international activities. JWWA, as Japan's national water works association, strengthens and expands international cooperation with different overseas water works associations including the associations of the US, Australia, Korea, Taiwan, Indonesia, India, Vietnam and Thailand.

• Activities Related to the International Water Association (IWA)

IWA is an international organization for promoting information sharing in both academic and practical areas of water management to develop public interest. Its headquarters are located in The Hague, Netherlands.

To establish an international cooperation framework for research and information sharing in the water field, JWWA and the Japan Society on Water Environment jointly form the IWA Japan National Committee and represent Japan in IWA as a member of the board. As the Governing Member of IWA, JWWA promotes participation in IWA activities. In the conferences, JWWA organizes the exhibition booth "Japan Pavilion" with our members to present Japan's technology and know-how to international markets and to provide international networking space for future relationships and business.

JWWA successfully organized IWA-ASPIRE conference in Tokyo in 2011, and it was decided that IWA World Water Congress in 2018 will be held in Tokyo.

• WOPs (Water Operators Partnership) Related Activities

To improve an image of international contribution of Japan's water supply industry and to strengthen future activities, JWWA actively promotes WOPs, a framework between Japan and developing countries.

• Promotion of Water Business

As a part of government growth strategies, Japan's infrastructure technology related industries are encouraged to go to overseas markets. The water supply industry is also keen to promote services as water business through export of Japan's water supply technology and operational know-how.

JWWA focuses on providing support for the water supply industry through various activities including information sharing with interested water supply utilities, presenting a Japan pavilion at international conferences, and holding Water Seminars commissioned by the Ministry of Health, Labor and Welfare in developing countries to demonstrate Japan's technology in water supply.

Activities for International Standardization

International standards on services and management of drinking water supply and wastewater are established by ISO/TC224 in 2007. Other standards related to water and wastewater management are also continuously developed under this Technical Committee.

Japan is actively involved in these ISO activities to contribute development of standards as the country which boasts high level of service to the customers and established crisis management systems for water supply and wastewater.

Overseas Training

JWWA has been providing overseas training programs to develop



Water Associations Meeting



IWA World Water Congress



JICA Knowledge Co-Creation Program

human resources with international perspective and knowledge and to promote global partnership since 1990. About 800 staffs of water supply utilities have sent overseas for training and networking through JWWA training program.

JICA Group Training Course

In response to request from Japan International Cooperation Agency (JICA), JWWA has been providing training programs for water supply engineers from developing countries since 1968. As of the end of 2013, 669 participants have been trained in our programs.

JWWA also has the registration system for senior technical experts to nominate JICA experts to be dispatched to developing countries. This cooperation scheme aims to contribute to development of human resources required for advancement of water supply services, technical transfer and improvement of water supply in developing countries.

Inspection Service

Fair and independent inspection service

In order to provide safe drinking water for the public, JWWA conducts performance testing and product inspections of water supply equipment and materials based on objective inspection criteria when requested by manufacturers who intend to provide equipment and materials.

Inspection Committee, consists of academic experts, consumer representatives and water supply utilities, conducts research and study of inspection service from expert viewpoints. The committee aims to provide optimum inspection services by improving inspection technique and methods. The Inspection Outline Task Force established under the Examination Committee discusses compliance with the "Ministry ordinance on technical standards of water supply facilities" and appropriateness of inspection methods. Five inspection offices and 16 local suboffices provide efficient inspection service.

In order to provide a safe and stable water supply for the public, it is essential to use quality and reliable water supply equipment and materials. Thus, third-party performance testing of water supply equipment and materials is becoming more important.

Four Inspection Service

1. Performance Testing and Inspection



Products are tested at inspection facilities based on technical standards and purchasers' criteria to maintain quality. Test items include performance testing such as hygiene levels and overall inspection.

2. Inspection Certification Mark

The inspection certification mark is attached to products that are verified for their proper performance through product inspection process. The certification mark enables purchasers such as water supply utilities to easily identify quality products. (See lower right)

3. Inspection Certificates

To clearly assure that a product has passed inspection in writing, JWWA issues a quality conformity certificate to the manufacturer. The manufacture issues an inspection certificate for the product with the quality conformity certificate on request from water supply utilities to prove the product quality. (See the figure below)

4. Listing

Manufactures' inspection facilities and certified water supply equipments and materials are registered with JWWA and listed on our website. JWWA aims to improve products quality and to enable purchasers such as water supply utilities to choose quality water supply equipment and materials.

JIS Mark Certification Service

In November 2005, JWWA was certified as an authorized certification organization for JIS mark certification by the Ministry of Economy, Trade and Industry based on the Industrial Standardization Law. If a manufacturer wants to produce JIS standard water supply related products, JWWA, upon the manufacture's request, conducts appropriate and precise inspection of the manufacture's quality control system and product testing to grant the JIS mark to certified products.

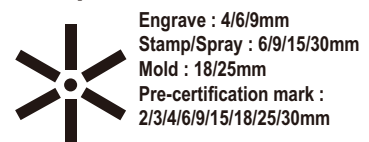
JWWA inspection service



JIS Certification Mark



Inspection certification mark



URL

<http://www.jwwa.or.jp/kensa/>

Quality Certification Service

Quality Certification Service

Since April 1997, JWWA has been providing third-party certification service that verify and certify water supply equipments with the “Ministry ordinance on standards of water supply equipment structures and materials (the Ministry of Health and Welfare Ordinance No. 14, March 19, 1997)” specified under the Waterworks Law.

In addition, since October 2000, the third-party certification service have been extended to water supply equipments and materials and water treatment chemicals, which are specified in the “Ministry ordinance on technical standards of water supply facilities (the Ministry of Health and Welfare Ordinance No. 15, February 23, 2000)” under the Waterworks Law. Products verified and certified by JWWA are listed on JWWA’s website.

Third-party certification process

JWWA’s third-party certification consists of two process: “certification registration” and “quality verification”. JWWA, upon request from a manufacture or a dealer, inspects water supply products such as service pipes, equipments, materials and water treatment chemicals with standards specified by the Waterworks Law. And conformed products are registered on the book or website. JWWA conducts “qualify verification” before a certification-registered product goes into the market. In quality verification process, JWWA checks manufacturing process of the product. Once the product passes

quality verification, the product is registered as a JWWA certified product.

There are two types of quality verification process; Self-inspection- JWWA check and assess a manufacture’s quality control system. If the system is appropriate, JWWA approves his self-inspection as JWWA’s quality inspection; Sampling- inspection - JWWA it self sample product for inspection.

Target Products

The following target products:

- ① Service installation: service pipes and fittings directly connected to the distribution pipes (service pipes, taps, valves, joints, water meters)
- ② Materials: used for water purification process (e.g. Surface coating materials, filtering materials)
- ③ Water treatment chemicals: (e.g. Flocculants, powdered activated carbon, disinfectant)

Examination Criteria

The following criteria are applied to quality verification:

- ① Basic criteria (service pipes/water supply equipments)
Performance standards specified by the Ministry ordinance on standards of water supply equipment structures and materials
- ② Technical criteria (water supply materials/chemicals)
Technical standards according to the Provision 4, Article 5 of the Waterworks Law
- ③ Special criteria (service pipes/water supply equipments)

In addition to the basic criteria, other performance standards (JWWA’ own standards or other organizations’ standards acknowledged by JWWA)

Quality Certification Mark

A “quality certification mark” is attached to certified products as quality confirmation. This certification mark enables consumers to easily check products’ quality with standards specified by the Waterworks Law. Quality certification marks can be attached by pasting stickers, engraving, molding or printing. Typical quality certification marks are as follows:

Certification related Committee

In order to operate fair and independent quality certification service, JWWA has the “Certification System Steering Committee” and “Certification Inspection Committee”, which consist of academic experts, consumer representatives, water supply utilities, manufacturers party and designated water supply installation service providers. Through these committees, JWWA seeks opinions and advice from broad perspective. The Certification System Steering Committee discusses important matters regarding our third-party certification service that require fair, independent and socially credible operations. The Certification Inspection Committee deals with technical and expert advice, review and research such as certification of new products.

Certification marks attached to basic standards conforming products



Certification marks attached to special standards conforming products and technical standards conforming products



URL

<http://www.jwwa.or.jp/Center/>



GLP Accreditation Service

Water Supply GLP

Since tap water is used as drinking water by consumers, quality testing of tap water especially requires a high level of reliability. To maintain reliability of water quality testing, JWWA defined the “Guidelines for Tap Water Quality Testing Good Laboratory Practice” (“GLP for Water Supply” in short) in September 2004. This GLP for Water Supply covers legal requirements and accreditation standards for certified water quality testing authorities specified by the Ministry of Health, Labour and Welfare. In addition, while this GLP for Water Supply conforms to ISO 9001, actual conditions of water

quality testing organizations are considered for practical application. In terms of water quality testing requirements, part of ISO/IEC 17025 provisions are selected for the same practicality.

To enable water quality testing organizations to implement a quality assurance system in line with the GLP for Water Supply, JWWA has been providing GLP accreditation services since August 2005.

Requirements

To succeed “GLP for Water Supply” accreditation, a water quality testing organization needs to meet administrative and technical

requirements of water quality testing specified in the GLP for Water Supply and takes inspection by JWWA.

Administrative requirements include establishment of a quality control system, clarification of management responsibilities, proper record management and scheduled training programs. Technical requirements include standard work procedures based on the applicable laws specified by the Ministry of Health, Labour and Welfare, proper inspection facilities suitable for water quality testing and proper management of inspection equipment.

Accreditation objectively certifies that an accredited water quality testing organization performs proper inspections under a controlled structure and actively implements measures for maintaining reliability of quality testing results.

Accreditation Status

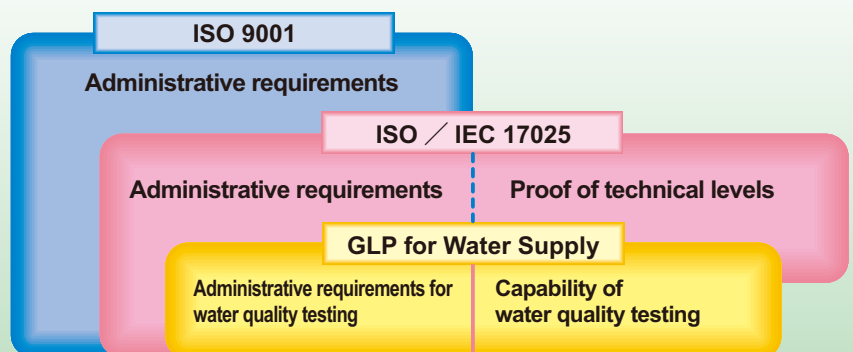
JWWA has the “GLP for Water Supply Service Committee” and the “GLP for Water Supply Accreditation Committee” for maintaining fair and independent inspection and accreditation services. Each inspection for accreditation by JWWA is conducted objectively. Since the first accreditation granted in December 2005, 117 water quality testing organizations including water supply utilities and water quality testing authorities registered under the Article 20 of Waterworks Law have been certified as GLP for Water Supply accredited organizations by the end of March 2015.



GLP for Water Supply
Accreditation Mark



Outline of the GLP for Water Supply, ISO/IEC 17025 and ISO 9001



Publication / Other Service



JWWA publishes water supply related books on both managerial and technical subjects.

In recent years, we have been publishing books based on new projects and revising existing books to accommodate needs for effective management of water supply utilities and changing environment of the water supply industry.

JWWA's main publications include books such as "Design Criteria for Water Supply Facilities", "Guidelines on Waterworks Maintenance and Management", "Standard Methods for Water Quality Examination" and "Details of the Waterworks Law Provisions". And our periodical includes monthly publication "JWWA Journal" and yearly publications "Water Supply Statistics", "Water Tarriff Tables" and "Proceedings of JWVA's Annual Conference and Symposium".

Since its first issue (December 1932), JWVA Journal has been providing various water supply related information as an official our publication and playing a major role in advancement of water supply services. And many excellent study papers published in JWVA Journal have been contributing to development of various water supply related engineering.



Water Supply Insurance scheme

The water supply insurance scheme has been introduced in 1979 by members' request. JWVA represents members to sign up group contracts. Insurance claims can be made for accidents related to water supply. The water supply insurance scheme covers water supply general liability insurance as well as damages caused by accidents of machine facilities and submarine pipes and accident and liability insurance for contracted meter readers.

JWWA publications

Administration/Management/General Subjects

Water Supply Related Legal Cases.....2008
 Water Supply Services Overview 6th Edition.....2015
 Marketing Operation Manual.....2011
 Dictionary of Water Supply Terms (2nd Edition).....2002
 Accounting Procedures of National and Local Consumption Tax in Water Supply Services.....1998
 Water Supply Manual.....2007
 Proceedings of JWVA's Annual Conference and Symposium.....Yearly publication
 Water Supply Rates Tables.....Yearly publication
 Detail Guidelines for Water Supply Services.....2005

General technology

Design Criteria for Water Supply Facilities (2012 Edition).....2012
 Instruction on Design of Mechanical and Electrical Equipment in Small and Medium Scale Water Supply Facilities.....2000
 Flow Rates at Pipes and flood-gates.....2002
 Water Supply Construction Standard Specifications [Civil Engineering] 2010.....2010
 Water Supply Construction Standard Specifications [Facility Construction] 2010.....2010
 Water Supply Facility Design Work Outsourcing Standard Specifications 2010.....2010
 Water Supply Facility Maintenance and Management Services Outsourcing Fee Estimation Draft Guidelines
 - Water Treatment Plant Operation and Management Services -2009
 Water Supply Facility Maintenance and Management Services Outsourcing Fee Estimation Draft Guidelines
 - Service Pipe Maintenance and Management Services -2010
 Seismic Design and Construction Guidelines for Water Supply Facilities (2009 Edition).....2009
 Seismic Design and Construction Guidelines for Facilities (2009 Edition) Design Sample Cases.....2009
 Seismic Design Manual for Water Supply Facilities2014
 Prestressed Concrete Tanks for Water Supply Design and Construction Guidelines and Details (1998 Edition).....1998
 Damage Estimation on Water Supply Service Pipes by Earthquake.....1998
 Guidelines for Waterworks Maintenance and Management (2006 Edition).....2006
 Guidelines for Water Supply Facility Upgrade.....2005
 Water Supply Related Accident Case Studies for Practical Use 2008.....2008
 Guidelines for Water Supply Equipment Maintenance and Management (2004 Edition).....2004

Water Treatment

Guidelines for Advanced Water Treatment Facility Installation.....1988
 Technical Manual on Advanced Water Treatment Facility (Organism Treatment Plant).....1988
 Technical Manual on Advanced Water Treatment Facility (Activated Carbon Treatment Plant).....1988
 Total Design of Water Treatment Facilities.....1995

Water Quality

Treatment of Trihalomethanes.....1981
 Water Supply and Asbestos.....1989
 Algae in Water Supply - Types and Details.....1993
 Organisms in Japan's Water Supply - Pictures and Details (Japanese Version)2008
 Organisms in Japan's Water Supply - Pictures and Details - (English Version).....2000
 Water Examination Methods (2011 Edition).....2011
 Water Examination Methods in Disaster Events Such as after Earthquake.....2011
 Health Impact Evaluations by Chemicals in Drinking Water (II) Chemical Substances.....1993
 Health Impact Evaluations by Chemicals in Drinking Water (III) Agricultural Chemicals.....1994
 WHO Drinking Water Quality Guidelines (Volume 1).....1994
 WHO Drinking Water Quality Guidelines (Volume 2).....1999
 WHO Drinking Water Quality Guidelines (Addendum) Microbiological Agents in Drinking Water.....2003
 WHO Drinking Water Quality Guidelines 3rd Edition (Volume 1).....2008
 Guidelines for Measures for Foul Smells and Taste Caused by Organisms.....1999
 Cryptosporidium - Details and Testing Methods -2002
 "Water Quality Test Planning" Manual.....2004
 Outlook of Practical Use of Ultraviolet-Based Sterilization Methods.....2004
 Manual for Preventing Organism-Related Troubles in Water Treatment.....2006
 Water Quality Testing/Management Services Outsourcing Fee Estimation Guidelines.....2011

Machine and Instrumentation

Trouble Cases in Water Supply Facilities 2005.....2005
 Practical Manuals for Water Supply Mechanical and Electrical Engineers Comprehensive know-how 2007.....2007
 Practical Application of Energy Policies in Water Supply Facilities 2009.....2009
 Extensive Facility Management Manual for Water Supply Facilities 2011.....2011

Manuals

Well Management Technical Manual (2014 Edition).....2014
 Water Supply Facility Maintenance and Inspection Services Outsourcing Specification Manual (1998 Edition).....1998
 Lake and Reservoir Water Resource Conservation Manual (1989 Edition).....1989
 Drain Iron Covers Maintenance and Management Manual 2004.....2004
 Water Supply Valves Maintenance and Management Manual 2004.....2004
 Manual for Enforcement of Water Pools at Water Supply Facilities by Iron Plates.....2006

Inspection / Certification

JWVA Inspection Procedures.....2003
 JWVA Quality Certification Service Procedures.....2012

Others

Water Supply Statistics.....Yearly publication

4-8-9 Kudan-minami, Chiyoda-ku, Tokyo 102-0074, Japan

General Affairs Dept. FAX: +81-3-3262-2244
General Affairs Div. TEL: +81-3-3264-2281
Accounting Div. TEL: +81-3-3264-2287
Planning Office TEL: +81-3-3264-2282
Research Dept. FAX: +81-3-3264-2205
Research Div. TEL: +81-3-3264-2359
Publication Div. TEL: +81-3-3264-2395
Training / International Dept. FAX: +81-3-3264-2306
Training Div. TEL: +81-3-3264-2462
International Div. TEL: +81-3-3264-2307
Engineering Dept. FAX: +81-3-3264-2237
Technical Div. TEL: +81-3-3264-2496
Standards Div. TEL: +81-3-3264-2543
Water Quality Div. TEL: +81-3-3264-2554
Inspection Dept. FAX: +81-3-3264-4563
Operation Div. TEL: +81-3-3264-2634
Inspection Div. TEL: +81-3-3264-2709
Quality Certification Center FAX: +81-3-3264-4634
Certification Div. TEL: +81-3-3264-2736
Quality Management Div. TEL: +81-3-3264-2736
Water Works Engineering General Institute
..... FAX: +81-3-3262-2244
..... TEL: +81-3-3264-2337
..... Web : <http://www.jwwa.or.jp>

OSAKA REGIONAL OFFICE

4-5-4 Fuminosato, Abeno-ku, Osaka City, Osaka Pref.
545-0004, Japan
TEL: +81-6-4399-5100 FAX: +81-6-4399-5101

KAWAGUCHI TRAINING CENTER

4-3-39 Kawaguchi, Kawaguchi City, Saitama Pref.
332-0015, Japan
TEL: +81-48-258-3881 FAX: +81-48-254-8022

TOKYO INSPECTION OFFICE

KAWAGUCHI BUILDING (WEST SIDE), 4-3-39 Kawaguchi,
Kawaguchi City, Saitama Pref.
332-0015, Japan
TEL: +81-48-251-3805 FAX: +81-48-252-6241

AICHI INSPECTION OFFICE

4-1-30 Jingu, Atsuta-ku, Nagoya City, Aichi Pref.
456-0031, Japan
TEL: +81-52-681-3136 FAX: +81-52-681-1909

OSAKA INSPECTION OFFICE

JWWA OSAKA BUILDING, 4-5-4 Fuminosato, Abeno-ku,
Osaka City, Osaka Pref. 545-0004, Japan
TEL: +81-6-4399-6100 FAX: +81-6-4399-6101

SHIGA INSPECTION OFFICE

260-25 Fujinoki, Koizumi-cho, Hikone City, Shiga Pref.
522-0043, Japan
TEL: +81-749-23-8391 FAX: +81-749-26-5110

FUKUOKA INSPECTION OFFICE

ZENRIN FUKUOKA BUILDING 2F, 3-1-26 Hakataeki
Higashi, Hakata-ku, Fukuoka City, Fukuoka Pref.
312-0013, Japan
TEL: +81-92-472-1707 FAX: +81-92-411-3500